

South Church Financial FAQs 2020

Q: Where does South Church get its money and where does it go?

Ninety-two percent of our total annual budget comes from pledges from church members and friends. The other 8 percent comes from endowment income and a variety of miscellaneous sources. These funds support our pastoral staff, youth and music programs, community and mission outreach and maintaining our historic building and parsonage. See the pie charts below for a complete summary of annual church spending and programs.

Q. What is a pledge?

A pledge is a good faith promise by church members to give a set amount each month/week to support South Church. Last year 229 households made this commitment to sustain our programs and outreach throughout the year.

Q. Tell me a bit about giving patterns.

For 2020 the average pledge was \$2,983, up \$100 (3.4 per cent), the largest increase in several years. About 229 households pledge annually while several more members and friends make donations during the year. All donations are welcome according to one's ability and individual circumstances. We never have, and still don't have, a small handful of large donors. Here's a profile of giving:

- 20 donors (9%) provide \$227,000 or 33% of this year's pledges.
- 37 donors (16%) provide another \$197,000 or 29% of this year's pledges
- 54 donors (24%) provide \$149,000 or 22% of this year's pledges
- The remaining 51% provide \$109,000, the balance of 16% of giving.
- Key point: 25% of South Church families provide 62% of the giving support in 2020.

Q. What is the Giving Goal for 2021?

We know that this has been a challenging year financially for many in our congregation; indeed, for many throughout the world. We are thankful that so many of you have been able to keep up with your pledge so far this year. In this time of economic uncertainty, we are asking members and friends to consider **sustaining their 2020 pledge through 2021**. This will allow us to continue supporting our staff and ministries as we discern what new goals we need to set in light of our "new normal." Of course, if you are able and so inclined, we welcome an increased pledge to help us continue to reach out and serve our congregation and community in many different ways.

Q. How do I Know What to Give?

Here are a few examples of giving amounts based on household income

Annual/Monthly Household Income	Monthly Pledge			
	1.5%	2%	3%	5%
\$36,000/\$3,000	\$45	\$60	\$90	\$150
\$60,000/\$5,000	\$75	\$100	\$150	\$250
\$96,000/\$8,000	\$120	\$160	\$240	\$400
\$150,000/\$12,500	\$187.50	\$250	\$375	\$625
\$180,000/\$15,000	\$225	\$300	\$450	\$750

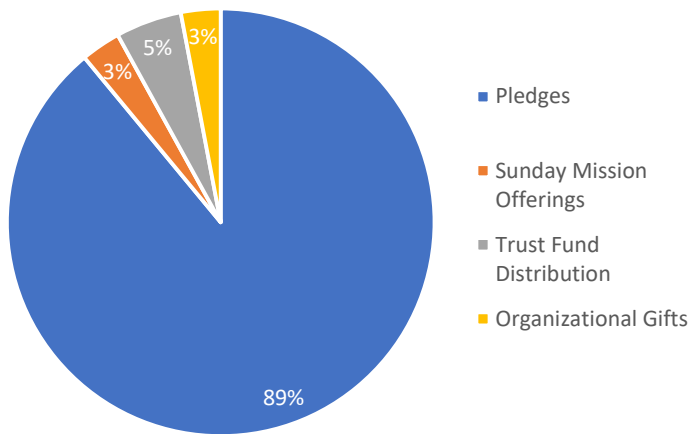
Q. How do I submit my pledge?

It's easy. You have several choices, they include:

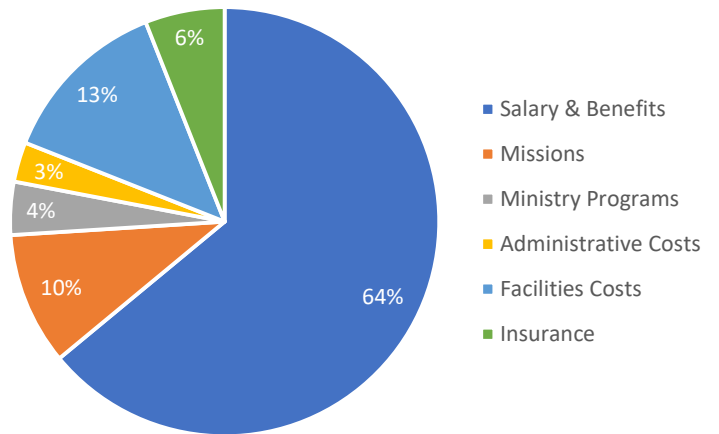
- You can use our integrated church management software (Realm) to make your pledge, set up your own recurring payments, and monitor your giving history. Visit SouthChurch.com/give
- If Realm feels too difficult, we have an online pledge form, too. Visit SouthChurch.com/give
- Fill out the enclosed pledge form and mail to or drop it off at the church office by Consecration Sunday, October 25.
- For those who are 70 and ½ years and own an IRA, there are significant tax advantages to donating directly to South Church (or any qualified 501(c) 3 charity) from your IRA. Contact your IRA custodian for more information.

At South Church, we strive to be as transparent as possible about how we fund our ministries, and what we do with the funding we receive. These pie-charts provide a general overview of our finances.

South Church Sources of Funds



South Church Use of Funds



As we mentioned in our letter: We know that 2020 has been a hard year financially for so many. We are thankful for all the ways that you and your family were able to support the ministries of South Church in the midst of so much uncertainty. If we can answer any questions that would help you and family make a decision to support South Church financially, please don't hesitate to let us know.